

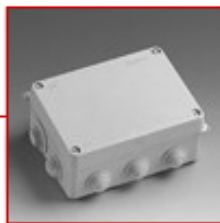
2FAC - CAJAS Y ACCESORIOS FAMATEL



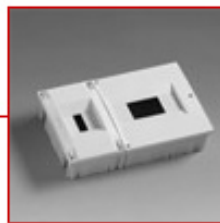
2FAC3900
CERRADURA METÁLICA
S.ACQUA/COMBI 3900 FA



2FAC3901
PLACA CIEGA PRETROQ.PARA
PULSADORES 3901



2FAC3902
PLACA TOMAS INDUST.IP44/
IP67 3902 FAMATEL



2FAC3903
RACOR UNIÓN PLACAS INDUS-
TRIALES 3903 FAM



2FAC3905
PLACA UNIVERSAL P/13950
3905 FAMATEL

2FAC3907
PLACA 2 TOMAS IP44/IP67
3907 FAMATEL

2FAC3909
PLACA ADAPTADOR PARA TOMA
3909 FAMATEL

2FAC3911
TAPONES INTERIORES 3911
FAMATEL

2FAC3915
PLACA CON TOMA 16A 2P+TTL
IP44 3915 FAMATEL

2FAC3916
PLACA TOMA CORRIENTE 16A
2P+TT IP67 3916

2FAC3918
PLACA CIEGA DOBLE PRE-
TROQ. PULSADOR.3918

2FAC3919
PLACA CON BOTON PARO
EMERGENCIA 3919 FAM

2FAC3920
PLACA CON TOMA 3P+T 63A
3920 FAMATEL

2FAC3921
PLACA CON TOMA 3P+N+T
63A 3921 FAMATEL

2FAC3952
CAJA 506X330X150 13 ELEM.
3952 FAMATEL

2FAC3956
CAJA SUPERF.IP65 330X330X130
3956 FAMATEL

2FAC3957
CAJA SUPERF9 ELEM.245X215X155
3957 FAMATEL

2FAC3958
CAJA SUPERF.9 ELEM.330X215X155
3958 FAMATEL

2FAC3961
CAJA SUPERF.8 ELEM.4 TOMAS
3961 FAMATEL

2FAC3962
CAJA SUPERF.13 ELEM.6 TOMAS
3962 FAMATEL

2FAC3963
CAJA SUPERF.3 TOMAS 3963
FAMATEL

2FAC3964
CAJA SUPERF.13 ELEMENTOS
3964 FAMATEL

2FAC3966
CAJA SUPERF.6 TOMAS 3966
FAMATEL

2FAC3968
CAJA SUPERF.13 ELEM.3 TOMAS
3968 FAMATEL

2FAC3970
CAJA SUPERF.13 ELEM.4 TOMAS
3970 FAMATEL